



**Lanner Parish Council Newsletter
2023**

Welcome and Happy Reading!

We hope 2023 has started well for all residents and you continue to enjoy living or working within the parish.

Don't forget the Parish Council are here to represent the wishes of residents so do let us know of any concerns, ideas or volunteer to get involved.

This edition of the Newsletter aims to bring you up to date with what Council has been doing and offer insight into some of the ambitious plans for the coming years.

There are 11 seats at Lanner but following the resignations of Cllrs Ian Jeffries and Liz Repper there are two vacancies which are to be filled by co-option. If you would like to find out more do get in touch or visit the website where there are more details of what the role involves and how to apply.

If you don't feel the time is right to stand as a Councillor perhaps you would like to join one (or more) of our working groups. Council have focussed on Climate Change and Environment, Community Gardening, improving the Emergency Plan and delivering the Christmas Lights display and associated events. We welcome anyone who would like to share ideas and help shape the way these matters are addressed.

All our contact details are on the back page so do get in touch.

Community Film Club

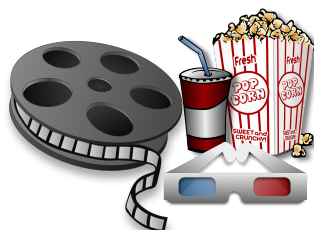
A big screen, surround sound and lots of popcorn awaits each month at the Film Club held at Lanner Village Hall.

Screenings run monthly with a film for young people on a Saturday morning and adult screening in the evening.

Special requests welcomed!

If you would like to help to run the club or simply come along to watch the film look out for social media posts, posters or check the council website.

Once a Fylm club member it's a reasonably priced treat and refreshments are available at cut price rates too!



Lanner Village Hall

The Village Hall has been managed by a team of Trustees since it was purchased for the village in 1946 by a group of residents who each donated £10. Throughout this time so many have given freely of their time and effort to ensure that a building was available for use by the community.

In 2009 renovations were completed that provided a new first floor and modern facilities that all can benefit from. The hall is in sound structural and financial form but the Trustees were unable to attract new membership to keep the facilities in good order and fund raise to cover the extras.

An approach was made to Lanner Parish Council to request transfer of the asset so that by accepting responsibility as Sole Corporate Trustee the hall would be protected and available for hire within Lanner. Council considered that as an asset of such considerable value to the community it would accept. In the later part of 2022 all legal hurdles were finally overcome and the formal transfer was completed.



To mark the occasion and to thank all the past serving and retiring Trustees for the tremendous work they had done a small ceremony was held to mark the passing of the baton of guardianship to the Council.

The Hall is looked after by Mrs Teresa Marshall, in her role as Manager, Teresa is the one to contact if you want to make a booking and Miss Stacey O Shea of SOS Cleaning Service makes sure it is all in tip top condition for your arrival. Council is delighted to retain their services and looks forward to welcoming you.

The full schedule of activities happening at the hall can be found on the Council website or by contact to Teresa. Everything from Life Class, fitness, Carpet Bowls, Wednesday morning market and baby ballet takes place on the ground floor and the first floor offers beauty treatments, hot desking/meeting room space and it's where you will find the Parish Council office too. A warm welcome awaits everyone on a Monday afternoon, 1.30 to 3pm, so drop in and enjoy a cuppa and a chat.

If you would like to hire the hall for an event, sale, training session or a children's party contact Teresa: lannervh@outlook.com or call 01209 204221. Great facilities, reasonable rates and a friendly team.

The Trustees may be different but the commitment to a community facility remains!

Lanner and Climate Change Today

Cllrs Biscoe, Bosworth, Garnett and Squire.

Lanner Parish Council as an organisation is actively seeking to reduce the impact of climate change on the parish and its community and is working to reduce the environmental impact of its direct activities.

A Climate Change working group has been set up and meets on the first Monday of each month. If you would like to be part of this steering group do get in touch, we would be pleased to hear from you. We are busy reviewing both policies and activities to see if we can improve both the way we work and what we deliver.

The Council is working on community engagement with Lanner residents to find out what you are already doing on the climate change front and what could be promoted. It may seem a small change but if, for instance, we can change distribution of this newsletter from a physical document sent out in the post to an electronic document circulated by email that will reduce costs and natural resources. Let us know if you would be happy to receive Newsletters by email and we can add your address to our mailing list; alternatively note this on the Community Survey enclosed.

We work with some very committed volunteers, the team is small but the workload can be rewarding and with additional help we could achieve a good deal more. If you are willing to commit a little of your time to activities including litter picking, planting trees, walking footpaths, Neighbourhood Watch, community speed watch, recycling, community gardening, maintaining the Village Hall and Carn Marth. The added bonus is that this would keep the cost of these provisions lower and therefore protect your Council Tax.

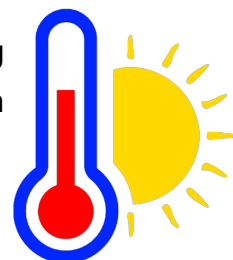
It is essential that we reduce the amount of greenhouse gases being added to the atmosphere, to minimise the amount of warming and the speed of change. Though this is a global issue, with action needed at all levels of society, we can all do our bit and be part of the solution. It is also important to find ways to live with our changing climate. For example, improving resilience to extreme weather (heat, drought and wildfire risk in summer, rainfall and flooding in winter).



Here are some tips to help reduce your carbon footprint:

Manage your home heating.

It's likely we're all doing this at the moment given the cost of energy, but making sure we're not using more heating than we need will keep household carbon emissions (and bills) down. Using a thermostat or other heating controls if you have them makes sure the heating isn't on when it isn't needed. Aim to keep the house comfortable but not hot.



Upgrading your home heating?

If you are in this position then there's an opportunity to cut your carbon emissions and save on your energy bills at the same time. From modern efficient boilers to ground source or air source heat pumps, there are many choices and the installation and running costs will vary. Groups such as Community Energy Plus or the Energy Saving Trust can help, with advice on the different options and any grants or other funding available.

Insulate and draught proof your home.

Any efforts you can make to insulate your roof, walls, floors, windows and doors will help stop energy being wasted. Insulation can involve some cost, though funding is sometimes available as are lower cost DIY options, and money spent on this will in time come back through lower energy bills.

Choose energy efficient appliances.

Any time you need to replace a home appliance it's worth looking at the energy efficiency rating and choosing the most efficient model within your budget. This will reduce energy use and save you money. Kitchen appliances account for around 13% of household energy use so these are particularly important. If you haven't already done so, swapping old lightbulbs for modern LED ones can save up to 65kg of carbon per year.

Low carbon travel.

Leaving the car at home and walking or cycling whenever possible is a great way to cut pollution and save yourself money. The same goes for using public transport. Though not always practical in Cornwall, the bus or train can be a good way to get where you need to go, and takes cars off the road. Bus fares have recently been reduced, sadly so too have the number of buses passing through Lanner. If you do need to drive, consider investing in an electric car next time you need a new one, or failing that the smaller the engine generally means smaller emissions. Travelling by plane has a massive carbon footprint, as do some ferries, so keeping this sort of travel to an absolute minimum is essential. Traveling from London to Paris by train instead of plane cuts emissions by 91%.



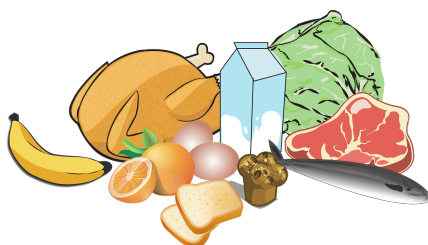
Reduce, Reuse, Recycle.

Every product we buy has a carbon footprint, and one carbon calculator estimates consumption of goods and services to be the largest part of Lanner's carbon footprint. The first step here is to consider whether we really need the things we buy and cut out things we don't need. Buying second hand helps here too. The next step is to reuse things as much as possible, then either pass them on or recycle if no longer of use.



Think about diet.

Meat and dairy account for the vast majority of farming's land use and most of its carbon footprint, so keeping these to a minimum is the best way to cut the carbon from your diet. Eating local and in season cuts "food miles", though the carbon savings here are smaller than those from reducing meat and dairy. This needn't mean cutting it out altogether, and [some meat and dairy is lower carbon than others](#), and can be part of a biodiverse and sustainable food system when farmed well. One option could be reducing your meat or dairy intake, saving money to spend on organic pasture fed food as a treat. Around a third of food produced currently goes to waste, sitting in landfill or sent to be burnt, so whatever your diet, we all need to plan our meals so as to minimise wasting food, and when possible try to compost any kitchen scraps (though cooked food and meat is harder and for this you will need a wormery).



This may all seem like a lot, and we don't have to do everything all at once. Every action that we take contributes to the global fight to keep our climate in a healthy state for years to come.

Some Helpful Links:

Sustainable Homes Advice Service - <https://www.cep.org.uk/sustainable-homes-advice-service/>

Energy Saving Trust - <https://energysavingtrust.org.uk>

Carbon Calculator - shorturl.at/bdF29

UN Report on Diet Change - <https://www.nature.com/articles/d41586-019-02409-7>

Eat Local vs What You Eat - <https://ourworldindata.org/food-choice-vs-eating-local>

Pasture Feeding - <https://www.pastureforlife.org/why-pasture/better-for-our-environment/>

Update On Speeding

A393 20mph Zones

We know your concerns about speeding traffic throughout Lanner and Council continues to petition and work closely with Cornwall Council to find a solution. Budgets are tight, resources are placed where there are accident records and there is a protracted process to follow to get the speed reduction measures, we all want to see in Lanner.

However, we are not daunted, and our pressure continues! Members of Council and the Clerk, met with Officers of Cornwall Council Highways to receive an update on the proposals for this area and the wider review of the A393.

Prior to this Cllr John Thomas, Ward Member, received a briefing and has significant influence on the progress of these matters.

Below is an update on the current situation, provided by the Cornwall Council Highways Officer:

Treviskey:

- Minor amendments have taken place to the design post consultation. These are:
 - The originally proposed pedestrian refuge near Coppice Gardens being changed to a traffic island. This came after the developer did not agree permissions for us to create a cut through to their proposed new private footpath
 - A small piece of footway being removed at the proposed crossing point near Penventon Nursery. This is due to the Nursery utilising this space for loading/unloading.
- All designs are currently going through a formal Road Safety Audit process, where further minor design amendments may be required.
- Further Ground Investigation (GI) work is required prior to any construction works being able to take place. This is due to the proposed works for this scheme having a substantial risk of encountering mining features, unexpected ground conditions and contaminated materials.
- All design work is due to be completed by the end of the calendar year.
- Construction expected to commence September 2023.
- In terms of any speed limit reduction, a reduction in speed limit from 50mph to 40mph was discussed in the early stages of scheme development however, it was deemed appropriate to progress and deliver the scheme proposals in the first instance, with the view of undertaking some post construction monitoring to inform future considerations towards any reduction in the current speed limit; thus ensuring an evidence based approach. Cornwall Council confirm that funding is in place to complete a review but a reduction in the speed limit is not guaranteed.



Lanner:

- An Expression of Interest (EOI) for Average Speed Cameras (ASC) is currently on the LTP IP nomination list for 2023/25 however, this list remains subject to sign off. Although this list remains subject to sign off, the EOI for ASC is unlikely to fall within the list of approved schemes for this programme.
- ASC could be delivered with funding secured for progressing Lanner feasibility proposals to detailed design however, funding will not allow for ASC as well as other feasibility proposals.
- ASC system feasibility and delivery costs to be determined and reviewed as soon as possible to support detailed design progress.
- Subject to review of ASC system feasibility and costs, agreement to progress the following feasibility proposals to detailed design: (likely to be commissioned early in the New Year)
 - Areas of red anti-skid surfacing and warning triangles to alert vehicles of cyclists/horse riders at the top of Lanner Hill (Carn Marth Lane)
 - Review options to stop pavement parking outside the shop
 - Review options to create some staggered on road parking near Pentreath Terrace. This will not be achieved as originally proposed in the feasibility (widening footway to then reduce to create parking).
 - Footway widening outside the surgery and playing field.
 - Upgrade four pedestrian refuges in Lanner and an additional pedestrian refuge by Carn Marth Lane.
 - Review options for a signalised crossing in the Lanner Square area.
 - Review fixed and mobile VAS options throughout Lanner.

If you have comments or questions regarding these proposals do let us know, we will be pleased to receive them and share them with Cornwall Council Highways and Ward member, Cllr Thomas.

Council continues to operate the Mobile Speed Activated Signs please make sure you always get a smile and stay within the 30mph speed limit! The Community Speed Watch Team welcomes new volunteers, the training isn't arduous, and you could really help educate motorists to slow down.

Contact Council via the Clerk: email: lannerparishcouncil@outlook.com tele: 01209200551 or in writing to: Parish Office, Lanner Village Hall, 9 Lanner Hill, Lanner Redruth TR16 6DB.

STOP PRESS!

We have just been advised that Cornwall Council plan to extend the roll out of 20mph zones and the area of Camborne/Pool/Illogan/Redruth and the surrounding villages will be the next area to be included. Keep an eye out for news updates as we learn more about this introduction, what impact it might have on travel and how it will be enforced.

Parish Council Funding

Parish and Town Councils are an essential ingredient of rural life and form the closest local government link to the community it represents.

How they are funded:

Parish councils are funded by a small part of the Council Tax known as the parish precept. This is the total amount to be raised through the Council Tax from all the dwellings within the Parish area. The 'Precept' is converted into an amount per Council Tax Band that is added onto the Council Tax bill.

This demand goes to the billing authority, Cornwall Council, which collects the tax for the Parish Council and pays to parishes in two six monthly instalments.

Parish and town councils can apply for other funding such as grant and funding awards, but they do not receive funds direct from central government, as principal authorities do.

Each parish council forecasts how much money it is going to need the following year. Council are subject to rigorous audit procedures and full details of the accounts are published on the website each month and are available for inspection by appointment.

Your Council Tax bill shows how much different authorities receive for providing local services and you can see what LPC is charging on your bill.

To meet expenditure for 2023/2024 Council resolved to increase the precept by 10 %. For a Band D property this represents an increase of £12.72 per year.

This will mean that not only can the current provisions be maintained but new projects can be developed, and additional services provided. If you would like to find out more, please don't hesitate to get in touch or come along to a meeting to find out more about how your money is spent!



There are many things that can be reported to Cornwall Council for action and the easiest way to do this is online.

If you notice a pothole, street light not working, highways issue or just want to update your details about voting and Council Tax this can all be done by completing an online form.

Report It: <https://www.cornwall.gov.uk/report-something/>

It only takes a few minutes and matters are investigated and sorted by CC within reasonable times.

Alternatively let us know by telephone to 01209 200551 or email:

lannerparishcouncil@outlook.com and we will do our best to get it sorted.

Weed Treatment.

Article by Cllr Chris Bosworth.

You may be notice the growth of weeds/grasses on paths, verges and kerbsides around the parish. The treatment/spraying of these areas was the responsibility of the County Council. This wasn't a statutory duty and with the cutbacks from national government was stopped as a cost saving exercise. When this happened the parish council stepped in and for several years, we have been treating these areas.

As part of the council's environmental policy we have decided to reduce the use of chemical herbicides (weed killers) in the parish. This is for two main reasons. The first, these chemicals do not discriminate. They kill not only weeds and grass but also small animals, insects and any plants they come into contact with. They have been linked to cancer and are highly toxic to humans. The second reason is the cost. The last treatment was at a cost of £2500 This was paid to licensed contractors to treat the worst affected areas. This cost will only increase as the price of these chemicals has soared in recent years.

The parish council realises that this policy has its problems and full investigations have been completed into alternative treatment weed eradication methods but this have all proved unsuitable or not cost effective.

Council hopes that with more community engagement we can still keep our parish looking neat and tidy. If you wish to keep the pavement outside your house clear, please use a hoe or sharp spade to remove any growth. (Please note it is illegal to spray weed killer on the pavement unless you are a registered contractor with a spraying license). If you have an elderly or disabled neighbour, please help them by clearing outside their house. We would advise you not to clear the road edge as this could be unsafe.

Let us know what you think about this change in policy or if you have suggestions.



News from Carn Marth Trust

Miranda Parry

By the time this Newsletter gets to its readers, we will have had a bumper season at the Amphitheatre in 2022, with companies new and old.

Our first show was described by almost everyone who came as 'intimate'... It was raining on and off, the audience was small and 'Owdyado Theatre's 'set' was tiny, so we put up our marquee on the stage and squeezed everyone in together. It is an indication of the enthusiasm and tenacity of a typical Cornish amphitheatre audience, that everyone turned up in their wet weather gear, fully prepared to sit it out, whatever the weather! A surprising number of people were first-timers to the theatre, so we had to explain that it wasn't the usual format and that they should come again soon, to get the full outdoor theatre experience!

And they did! Our next show was “The Recruiting Officer” by George Farquar, performed in rumbustious style by Rain or Shine Theatre Company. A good time was had by all and we hope that they will come again next year when they will be doing Shakespeare’s “The Comedy of Errors”.

Long-standing visiting company, Miracle Theatre, then brought us “King Lear”. We were their first venue, kicking off their summer season with a two night run. Both nights were well attended, with the first night’s audience being swelled by a group of about 70 school kids. We never did find out exactly where they came from - “somewhere up-country” being the closest anyone could pinpoint it. By the end of the evening we were all feeling rather sorry for them, as no-one had apparently warned them that t-shirts and shorts weren’t the ideal garments for an evening at the Amphitheatre, even if it had been warm earlier in the day.



The Production of King Lear at the Amphitheatre

That was followed by a heart-warming puppet show with an environmental theme “When Seagulls Saved the World” and at the end of the season, The Splendid Sisters gave us The Splendid Hut, despite inclement weather. (It poured with rain!)

As might be imagined, quite a lot of background work goes on in order to bring performances to the Amphitheatre and this is being done by a small band of volunteers, none of whom are getting any younger.... (You know where this is going, don’t you....)

If we want to keep putting on events at the Amphitheatre, we need some more help! We have the booking of the companies covered, but distributing the publicity is becoming more and more complex. Gone are the days of putting up a few posters (though we still do that and volunteers to put them up would be warmly welcomed). Social media is a great tool, but it does need time and effort to get it right. The lovely gentleman at the top of Lanner Hill allows us to erect a sign board and put up banners (Hooray for banners! No more time-consuming sign-writing!) but even this isn’t a one-off job, as the banners need to be changed over and the signboard itself often needs attention following the depredations of either the weather or the occasional vandal.

And then there is the vexed question of what to do about the toilet arrangements. We are trying to get away from the use of chemical toilets, from both a cost and ecological point of

view, but we haven't come up with the ideal solution yet. Our lovely compost loo trailer hasn't stood up to the test of time very well and now needs more renovation than the current volunteers have either the time or the skills to offer. (Is this your idea of fun, anyone? Do say if so....)

Oh, and how about someone to maintain and update the website and run the Instagram the Facebook pages?

And, and, and... There are many small jobs, that don't take up a lot of time in themselves, but when all are being done by the same few people, DO become a chore. If any of you out there feel able to offer a bit of time to lighten the load, please do get in touch. You don't need to spend time attending committee meetings if that's not your thing (though of course you would be welcome to do so!), just be on hand to take on small specific tasks like putting up posters in your area, and/or taking posters down again, or sharing some social media posts, or perhaps ushering audience members (and getting in to the performance free of course), maybe running a raffle, or doing a bit of strimming in the Amphitheatre and parking areas (OK, not such a small task!), helping sell refreshments, canvassing audience members for feedback, and so on and so on.

Please do get in touch!

Miranda, events@cammarth.org.uk or 01209 821673

Community Survey

Why complete it!?

In this Newsletter you will find a copy of the Community Engagement Survey which Council is using to collate information that will help to inform Council policy, procedure and action in the future. It is essential that we build resilience in our community in order to respond to challenges through an Emergency Plan; we would like to reduce costs, for example to circulate the Newsletter electronically when possible, and learn a little more about what efforts can/ are being made to address the climate emergency.

If you have not completed and returned a copy already (we have only done a few areas yet, Strawberry Fields, LanMoor, May Gardens) please do so and return it to the Council by scanning and emailing or sending or delivering the copy back to the Parish Office at Lanner Village Hall. You do not have to answer every question. The GDPR (General Data Protection Regulation) section is important as if you accept that the Council can keep your contact details on file and use them if necessary.

We look forward to working with you and achieving so much more by working together.



Christmas 2022

At a time when there is stark difficulty, particularly with spiralling costs, facing us all, Council remained determined to continue to spread good cheer with the erection of Christmas Lights throughout Lanner. We hope you enjoyed the festive cheer!

The Lantern parade and official switch on held at the Playing Field saw a record crowd attending and we were delighted to see so many taking part especially with very innovative lanterns. The food and fairground ride proved popular and the musical entertainment from Lanner Silver Band, Samba Cambada and The Singing Seagulls much enjoyed. We thank everyone for coming along and especially Kay and Erica from Warrior Garden Centre/ Amy's Bar and Kitchen for doing the honour of flicking the switch! Father Christmas was delighted to chat to so many children and offer a token gift until the main deliveries on Christmas Eve.

None of this would have been possible without the tireless work of Councillors, Clerks and Volunteers all lead by Chairman of Lights Cllr Trevor Wearne. Our thanks are extended to those who allow us to connect to their electricity feeds, this means we can light up more of Lanner. If you can offer a connection point next year do let us know and it could help us even more!

The generosity of supporters has helped to meet the costs and ensure we can extend the displays even further next year.

Our sponsors this year:

Redruth Charity Trust
Bill Bannister Estate Agent
The Coppice Inn
Carharrack Animal Feeds
Lanner Fish Bar
Gemini Dance Studio

We are already planning for 2023 and as safety requirements remain of paramount importance and our ambitions soar we are delighted to have Gwyn Richards of Reach Maintenance to get to the high spots and improve our displays even further.

Save the date for 2023 – Switch on Friday 8 December 2023.





LANNER PARISH COUNCIL
Improving our community

COME AND DO SOMETHING POSITIVE WITHIN OUR COMMUNITY
TODAY

BECOME A LANNER PARISH COUNCILLOR



To be a Parish Councillor you must be aged over 18 and be a Commonwealth citizen (which includes a British subject) or a Euro national.

In addition, you must satisfy ONE of the following conditions:

- **You must have, during the whole of the preceding 12 months, occupied as owner or tenant any land or premises in the parish.**
- **Your principal or only place of work during the preceding 12 months has been in the parish.**
- **You must have, during the whole of the preceding 12 months, resided in the parish or within 4.8 km of the parish.**
- **You must be registered as a local government elector for the Parish.**

CALL/EMAIL/MESSAGE FOR AN INFORMAL CHAT OR AN APPLICATION FORM.

APPLICATIONS SHOULD BE RECEIVED BY WEDNESDAY 8 MARCH FOR CONSIDERATION BY COUNCIL ON THURSDAY 30 MARCH 2023.

WARM SPACES

Lanner Methodist Church



Pop-up Cafe

Thurs 2nd & 16th Feb

11:30 – 3.00

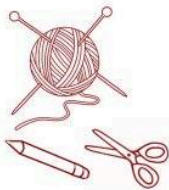


Come along and enjoy:
A simple lunch, hot drinks
and other refreshments.



Also
Jigsaws, Books,
Crafts &
Other activities

No Charge



Christchurch Lanner

Christchurch is open every day
from 9am - 5pm for everyone.

There is an open pantry outside
open 24 hrs.



TOASTY TUESDAYS

In the Church Hall

Every Tuesday 1pm - 4pm
with soup, bread, tea, coffee.
And games to play.



Lanner Village Hall

Munchy Mondays

Every Monday
from 1.30pm-3pm
Everyone is welcome to
come along.

Meet new friends, enjoy tea,
coffee, snacks, games, a quiz
and music.

Warm Box

Help yourself to what you
need from the warm box
outside the Hall.

Open 24hrs a Day.
Food, gloves, hats, hot water
bottles and more.



Post Office Service

Post Office Outreach service.

Monday & Wednesday

1pm-3pm

Lanner Village Hall



Wide range of Post Office
Services available from banking,
postage, electricity and more.



Contact

Chairman: Councillor Tim Luscombe

The Count House, Wheal Buller, Redruth, TR166ST

Tel: 07968533504

Email: timluscombe@lannerparishcouncil.net

Vice Chairman and Chairman Planning Committee: Councillor Helen Bilham

Ashleigh, Higher Pennance, Lanner, TR16 5TQ

Tel: 07933782766

Email: helenbilham@lannerparishcouncil.net

Councillor James Biscoe

Tremana, Foundry Hill Stithians Truro TR3 78S

Email: jamesbiscoe@lannerparishcouncil.net

Councillor Chris Bosworth

West Trevarth Cottage, West Trevarth, Lanner, TR16 5TJ

Tel: 01209 821310

Email: chrisbosworth@lannerparishcouncil.net

Councillor Tim Burley

Pencrennow, Pennance Road, Lanner, Redruth, Cornwall, TR16 5TF

Tel: 07811137047

Email: timburley@lannerparishcouncil.net

Councillor Alasdair Garnett

8 Bears Terrace, Lanner TR16 6HS

Email: alasdaigarnett@lannerparishcouncil.net

Councillor Ross Marshall

37 Lanner Hill, Lanner, Redruth, TR16 6DW

Tel: 01209 215695

Email: rossmarshall@lannerparishcouncil.net

Councillor David Squire

Glyngarth, Lanner, Redruth, TR16 6HJ

Tel: 01209 418364

Email: davidsquire@lannerparishcouncil.net

Councillor Trevor Wearne

12 Bell Lane, Lanner, TR16 6AP

Tel: 01209 211029

Email: trevorwearne@lannerparishcouncil.net

Clerk: Mrs Elaine Youlton & Assistant Clerk: Mrs Teresa Marshall

Lanner Parish Office, Lanner Village Hall, 9 Lanner Hill, Lanner, Redruth, TR16 6DB

Tel: 01209 200551

Email: lannerparishcouncil@outlook.com

